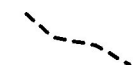
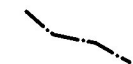




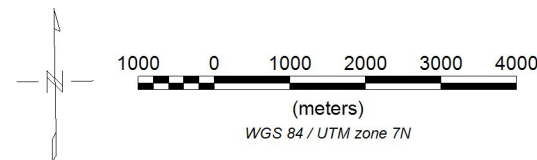


RMI (nT)

Legend

-  Inferred Structural Lineation
-  Interpreted Fault
-  Interpreted Intrusive
-  Interpreted Highly Altered Intrusive
- Soil Samples**
 -  Cu > 100 ppm
 -  Au > 30 ppb



Nevada Zinc Corporation

Magnetic Map VIP Block

20 metre Downward Continuation
with Structural Interpretation

May 30, 2016

Precision
GeoSurveys